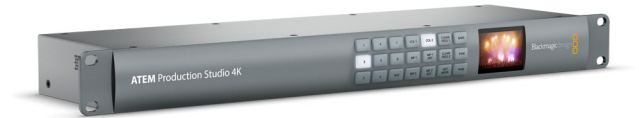


ATEM Production Studio 4K



ATEM Production Studio 4K lets you connect up to 8 SD, HD or Ultra HD 4K video cameras, disk recorders and computers to do true broadcast quality work. You get all the features you expect from a professional switcher including chroma key, transitions, media pool, downstream keyers, audio mixer, multi view and the world's first 6G-SDI and HDMI 4K video connections.

Connections

Total Video Inputs

8

Total Video Outputs

6

SDI Rates

270Mb, 1.5G, 3G, 6G.

Total Audio Inputs

2 x XLR. 2 x RCA.

Total Audio Outputs

2 x XLR Program.

Timecode Connections

None

SDI Video Input

4 x 10-bit SD/HD/Ultra HD 4K switchable.
2 channel embedded audio.

HDMI Video Input

4 x HDMI type A, 10-bit SD/HD/Ultra HD 4K switchable. 2 channel embedded audio.

SDI Audio Output

2 channel embedded into SDI output.

Reference Input

Tri-Sync or Black Burst.

Video Input Re-Sync

On all 8 inputs.

SDI Program Output

1 x 10-bit SD/HD/Ultra HD 4K switchable.

HDMI Program Output

1 x HDMI type A, 10-bit SD/HD/Ultra HD 4K switchable.

Down Converted SDI

Program Output

1 x 10-bit HD (Ultra HD 4K to HD).

SDI Aux. Output

1

Quantity of Multi Views

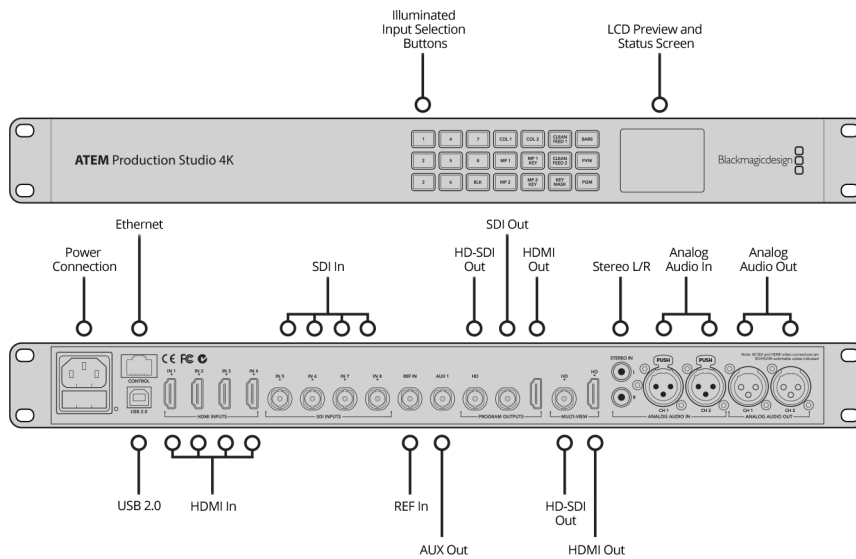
1

Outputs per Multi View

1 x HD-SDI and 1 x HDMI.

Control Panel Connection

Ethernet supports 10/100/1000 BaseT. Allows direct connection between panel and chassis, or via network.



Standards

SD Format Support

525i59.94 NTSC, 625i50 PAL

HD Format Support

720p50, 720p59.94
1080p23.98, 1080p24, 1080p25,
1080p29.97, 1080p50, 1080p59.94
1080i50, 1080i59.94

Ultra HD Format Support

2160p23.98, 2160p24, 2160p25,
2160p29.97

SDI Compliance

SMPTE 259M, SMPTE 292M, SMPTE 424M.

Video Sampling

4:2:2

Color Precision

10-bit

Color Space

REC 601, REC 709

HDMI Input Resolutions for Computers

720 x 480i 59.97Hz, 720 x 576i 50Hz,
1280 x 720 59.94Hz, 1280 x 720 50Hz
and 1920 x 1080 59.94Hz,
1920 x 1080 50Hz,
3840 x 2160 23.98Hz,
3840 x 2160 24Hz, 3840 x 2160 25Hz,
3840 x 2160 29.97Hz.

Colorspace Conversion

Hardware based real time.

Processing Delay

1 Line.

Audio Mixer

10 input x 2 channel mixer. Selectable On/Off/Audio-Follow-Video. Level and Peak metering. Master gain control. Analog outputs may be used for separate monitoring.

4K to HD Down Conversion

Yes, program x 1.

Product Specifics

Upstream Keyers

1

Downstream Keyers

2

Chroma Keyers

1

Pattern Generators

3

Color Generators

2

DVE with 3D Borders & Drop Shadow

None

Routable Windows

8

Tally

Red for program and green for preview indication.

Windows Source Labels

Yes

Linear/Luma Keyers

3

Transition Keyer (Stinger/DVE)

None

Total Number of Layers

4

Display interface

Minimum monitor resolution of 1366 x 768.

Number of Windows

1 x 10

Control Panel

Software or optional hardware panel.

Media Player**Media Players**

2

Media Player Clip Length in 1080 HD

None

Media Pool Video File Format

None.

Media Pool Still Image Capacity

20 with fill and key.

Media Player Clip Length in Ultra HD

None

Media Pool Audio File Format

None.

Media Pool Clip Capacity

None

Media Pool Still Image Format

PNG, TGA, BMP, GIF, JPEG and TIFF.

Channels

Fill and key for each Media Player.

Media Player Clip Length in 720 HD

None

Multi View Monitoring**Multi View Monitoring**

1 x 10 Views.

Multi View Video Standard

HD.

Display**Interface**

Minimum monitor resolution of 1366 x 768.

Front Panel

Built in LCD monitor for video and 42 LED buttons for Aux switching.

Software**Control Panel Included**

ATEM Software Control Panel included free for Mac OS X 10.10 Yosemite, Mac OS X 10.11 El Capitan or later and Windows 8.1 64-bit or Windows 10 64-bit.

Software Updates

Using USB connection directly connected to Mac OS X or Windows computers. Includes ATEM Switcher Utility.

Configuration

Set via ATEM Software Control Panel, excluding ATEM chassis IP address which is set via the ATEM Switcher Utility connected via USB to chassis.

Tally Output

Added via Ethernet connection to Blackmagic Design GPI and Tally Interface product. (Not included.)

Operating Systems



Mac OS X 10.10 Yosemite,
Mac OS X 10.11 El Capitan
or later.



Windows 8.1 64-bit or
Windows 10 64-bit.

Power Requirements

Power Supply

1 x Internal 110 - 240V AC.

Power Usage

60W

Physical Specifications



Environmental Specifications

Operating Temperature

0° to 40° C (32° to 104° F)

Storage Temperature

-20° to 60° C (-4° to 140° F)

Relative Humidity

0% to 95% non-condensing

What's Included

ATEM Production Studio 4K
SD card with software and manual

Warranty

12 Month Limited Manufacturer's
Warranty.

Repair policy

Warranty details can be found in the
ATEM Switchers Operation Manual in
the support page at
www.blackmagicdesign.com

All items on this website are copyright Blackmagic Design Pty. Ltd. 2017, all rights reserved.
All trademarks are property of their respective owners. MSRP excludes sales taxes/duties and shipping costs.

Blackmagic Design Authorized Reseller